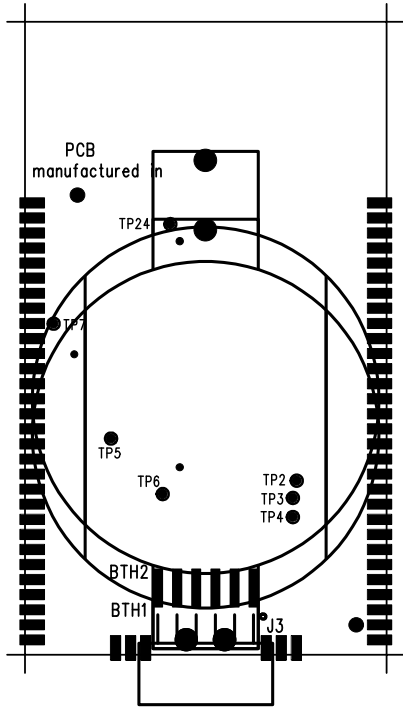
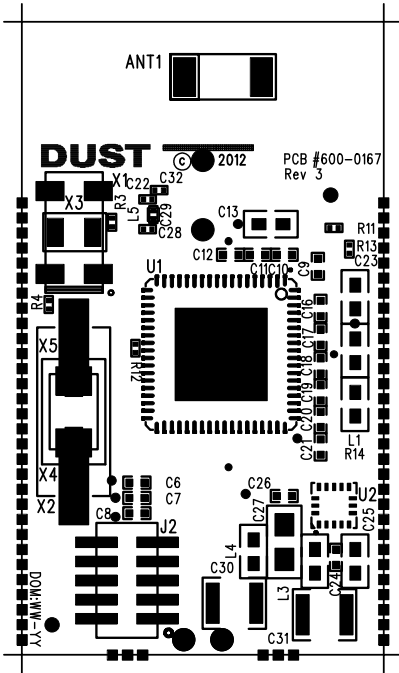


NOTES (UNLESS OTHERWISE SPECIFIED):

1. ASSEMBLE AND INSPECT IN ACCORDANCE WITH IPC STANDARD IPC-H-610D CLASS 2.
2. MAXIMUM PROTRUSION OF THE MOUSE BITES IS +0.010".
3. FINISHED ASSEMBLY TO BE FREE OF ALL SOLDER FLUX RESIDUES.
4. FINISHED ASSEMBLY TO BE SHIPPED IN APPROVED ANTI-STATIC PACKAGING.
5. ALL PROCEDURES REQUIRE ROHS-6. NO CLEAN SOLDER.
6. INSTALL RF SHIELD ON THE TOP SIDE BY INSERTING PINS INTO THE CORRECT MOUNTING HOLE POSITIONS.
 - a) SOLDER ALL FOUR CORNERS ON THE TOP SIDE.
 - b) CLEAN ALL FLUX RESIDUE FROM SOLDERED AREAS.
7. PLACE LABEL ON TOP OF THE SHIELD. FORMAT:
 - a) DUST PART NUMBER/REV.
 - b) U1 LOT NUMBER.
 - c) DATE OF MANUFACTURE (WW-YY).

R E V I S I O N S				
ECO	REV	DESCRIPTION	DATE	APPROVED
	1	INITIAL RELEASE	8-27-10	
1027	2	MINOR CLEAN-UP	5-16-12	
1178	3	ADDED L5	10-22-12	



SEE SEPARATE BOM, 700-0167

		UNLESS OTHERWISE SPECIFIED, DIMENSIONS ARE IN INCHES: TOLERANCES ARE: FRACTIONS: DECIMALS: .XX + .01 ANGLES: 0° 30" .XXX + .005 MATERIAL - FINISH - DO NOT SCALE DRAWING	APPROVALS	DATE	DUST NETWORKS			
			DRAWN BY: R.P.D.	8-27 -10	TITLE: PCA ASSY, MODULE, RUSSIAN			
			CHECKED					
			ENGRG					
NEXT ASSY	USED ON		ISSUED		B	FSCM NO.	DWG NO. 705-0167	REV. 3
APPLICATION		CONTRACT NO.		SCALE: NONE			SHEET 1 OF 1	